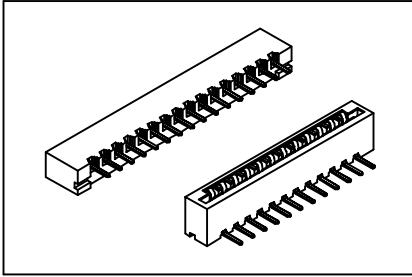


# FFC/FPC Connector 2.54mm(0.100") Non ZIF Type **GXCON**



**Material:**

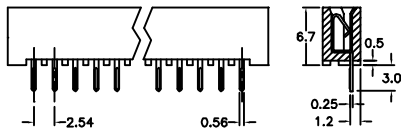
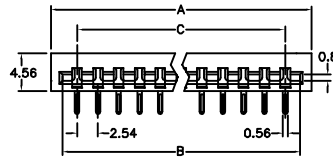
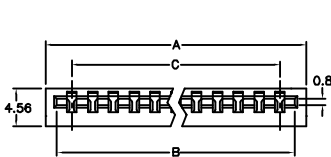
Housing: 30% Glass filled PBT UL94V-0.  
 Contacts: Phosphor Bronze.  
 Plating: Tin plated.

**Electrical Characteristics:**

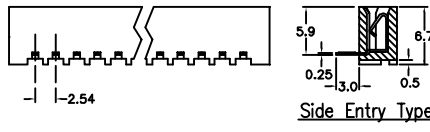
Current Rating: 1 AMP.  
 Insulator Resistance: 5000MΩmin. at DC 500V.  
 Contact Resistance: 20mΩmax. at DC 100mA.  
 Operating Temperature: -55°C~+105°C.

**Features:**

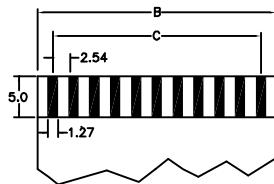
- \* Size 6 through 27 available.
- \* Straight & right angle, Non-ZIF.
- \* For 0.3mm(0.0118") thick FFC/FPC, membrane switches.



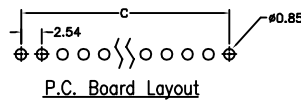
Top Entry Type



Side Entry Type



FFC/FPC Dimension  
 Thickness 0.3±0.05mm



P.C. Board Layout

Position Dimension	2 Thru 26
A	(No. of Positions X 2.54)+5.46
B	(No. of Positions X 2.54)+3.35
C	(No. of Positions - 1) X 2.54

**Ordering information**

FC31- 26 2 S  
 Series No. of Pin Count 2: Tin Plated S: Top Entry (Straight)  
 R: Side Entry (Right Angle)